



Co-funded by the
European Union



Master School and Fellowship Academy Open Call

Info-session: 4 September 2024

Agenda

4 September 2024 – 10:30-12:00		Speakers
10:30	General information	• Daniela Rodrigues, EIT Urban Mobility Academy Programme Manager
11:00	Scope, goal, requirements of the call	
11:00	General procedures	• Isabell Tributsch, EIT Urban Mobility Programme Management Office
11:45	Call Calendar	
11:45	Proposal submission Evaluation and selection	
11:45	Questions & Answers	
12:00		

Housekeeping Rules

- This info-session is being recorded and will be published on the call website
- Please mute your microphones
- Use the Q&A chat box to make your questions. They will be answered at the Q&A session

Academy General Information



EIT Urban Mobility Academy

The Academy aims to **close the knowledge gap** by training the next generation of urban mobility practitioners and fostering Innovation and Entrepreneurship (I&E) capacity among Master and PhD graduates.

Through our programmes and courses, we provide interdisciplinary, international and entrepreneurial formats for students and working professionals to help them develop the skills needed to build and manage the mobility solutions of the future.



EIT Urban Mobility Master School

Challenge driven pan-European 2-year EIT labelled master programme, combining Innovation & Entrepreneurship training with technology and technical knowledge

Key features:

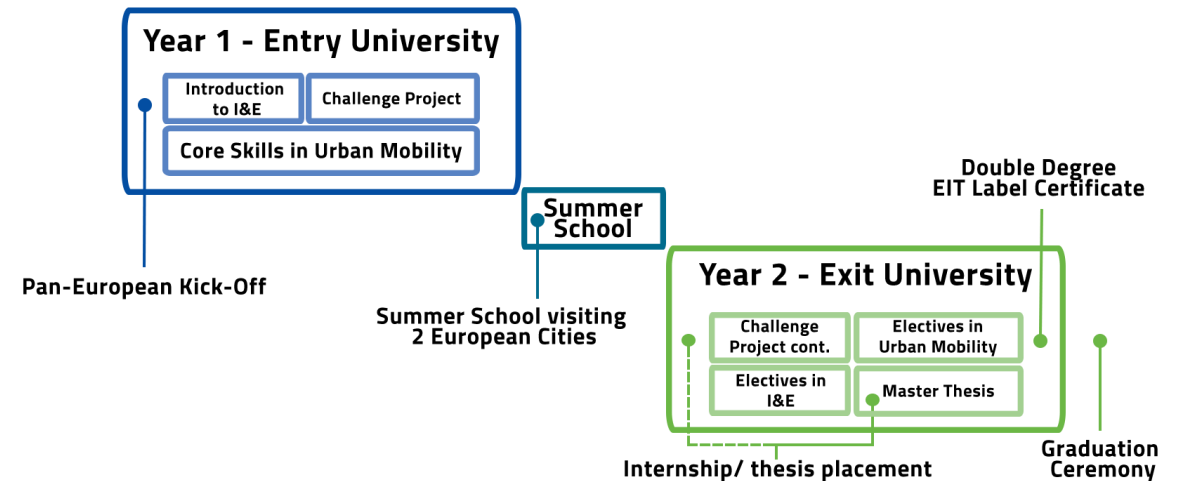
- Double-degree programmes
- Study at 2 different European universities
- Focus on Innovation and Entrepreneurship (I&E)
- Summer School in two different countries
- Industrial Internship & Thesis placement
- EIT-Labelled programmes
- Support for entrepreneurial ventures

200+

Students enrolled to date

8

Partner Universities



TU/e EINDHOVEN
UNIVERSITY OF
TECHNOLOGY



A!
Aalto University



GHENT
UNIVERSITY

Technische
Universität
Braunschweig

U LISBOA
UNIVERSIDADE
DE LISBOA

IST TÉCNICO
LISBOA

EIT Urban Mobility I&E Fellowship

The EIT Urban Mobility Fellowship is designed to complement existing Master Programmes focused on I&E to foster innovation and entrepreneurship in urban mobility. It provides students enrolled in these programmes with additional activities and resources so that they become skilled innovators and entrepreneurs.

Key features:

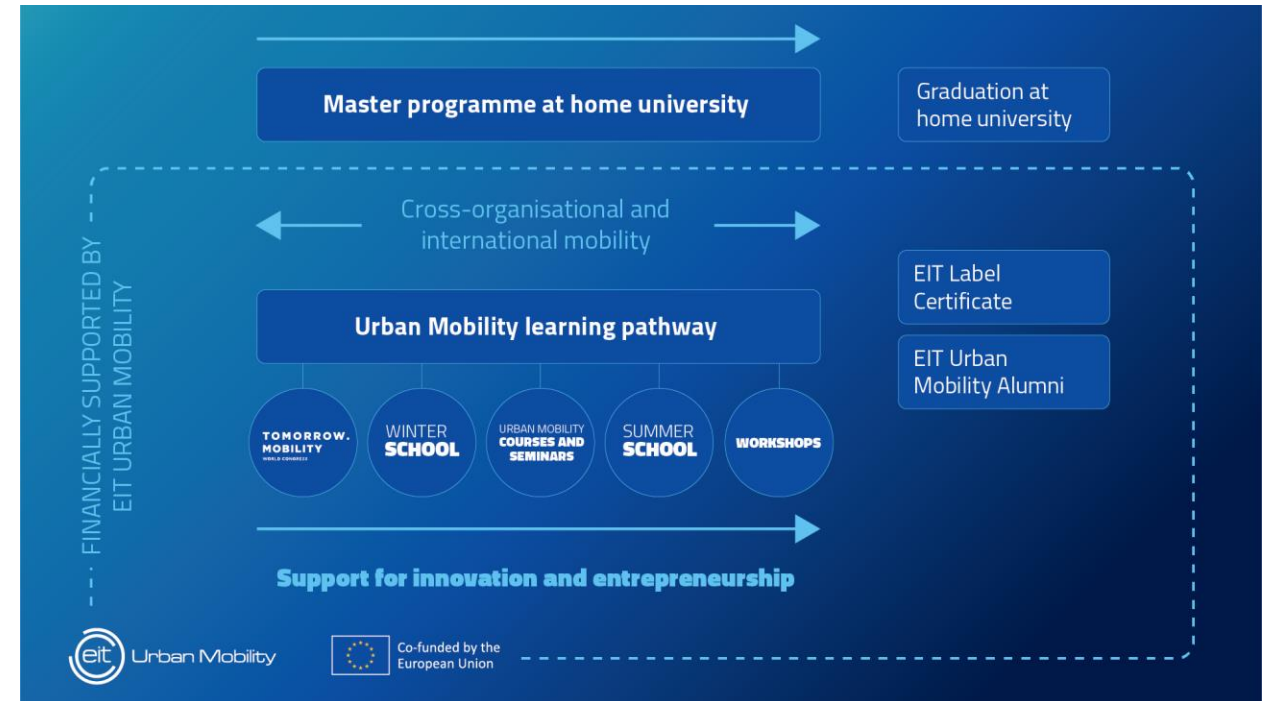
- Applied learning approach
- Focus on Innovation and Entrepreneurship (I&E)
- Cross-organisational and international mobility
- Strong links to industry
- Support for entrepreneurial ventures

20+

Students enrolled

2

Partner Universities



Call General Information



Main Features

Call opening: 24 July 2024

Call closing: 10 October 2024 at 17:00 CET

Communication of results: December 2024 – January 2025

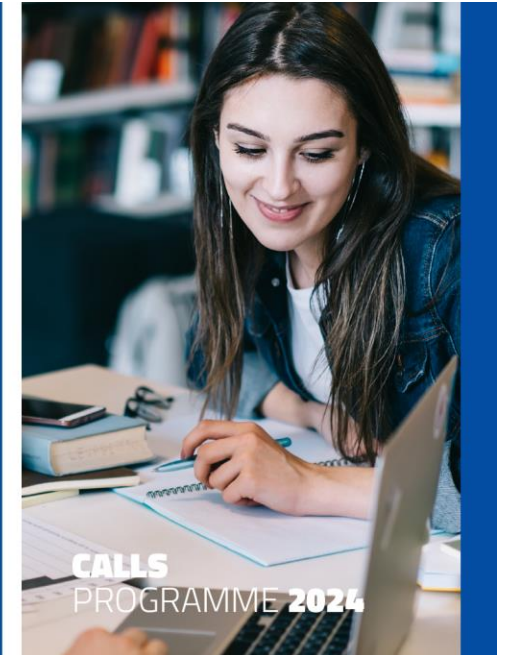
Project start: February 2025

Project duration: 9 to 11 months, depending on the activity type*

Total EIT funding allocation: 1,500,000 EUR

Financial Sustainability: Required on some activities

Applicants: Mono-beneficiaries or consortia, depending on activity type



**EIT Urban Mobility's current commitment only extends until 31 December 2025 under the existing Business Plan 2023-2025. The continuation of the activities in 2026 will operate under a new Business Plan and will depend on a positive performance assessment made by EIT Urban Mobility in the first year of implementation.*

Activity 1: Summer Schools for Master students (MSA1)

Scope: Development and implementation of a Summer School programme following our summer school structure, using challenge-based learning and hosted in two different countries, in alignment with the Master School academic calendar.

Goals: To deliver a summer school that can take at least 15 Master School students and 15 external participants, with the possibility of accommodating up to 45 participants in total.

Partner Requirements: Multi-entity applicants. Development and implementation of learning programme, and planning and management of the travel arrangements in coordination with the Master School Office.

Financial Sustainability: Minimum revenue of 8000 EUR to EIT Urban Mobility. Revenue-sharing mechanism.

Minimum targets:

KPI	Short title	Target (per year)
EITHE07.1	Graduates from EIT labelled programmes	Minimum 15 (on top of Master School students counted under the MS activity)
EITHE08.1	Participants in (non-degree) education and training	Minimum 15 (on top of Master School students counted under the MS activity)

Note: In your application select EITHE07.1. If the EIT Label is not granted, external participants will be counted towards KPI EITHE08.1.

Activity 2: New EIT Urban Mobility Master programmes (MSA2)

Scope: Development and implementation of Master programmes, two years and 120 ECTS in length, including study periods in two countries (entry year in one academic institution and exit year in another). The programmes must comply with the pertinent national accreditation boards so that the awarded diplomas are legally recognised across Europe. And should be compatible with the EIT Label requirements for Degree Education.

Goals: To develop a new programme that complements our portfolio of Master-level education. Students are expected to enrol Autumn 2026.

Partner Requirements: Multi-entity applicants.

Minimum targets:

KPI	Short title	Target (first iteration of the programme)
EITHE05.1	Startups created by students and/or graduates from EIT-labelled programmes	Minimum 2
EITHE07.1	Graduates from EIT labelled programmes	Minimum 20

Activity 3: New universities joining the existing EIT Urban Mobility Master School programmes (MSA3)

Scope: To expand our existing offer of Master programmes to include new partners and cover new geographies. The existing programmes are: “Sustainable Urban Mobility Transitions”, “Smart Mobility Data Science & Analytics”, and “Business Engineering in Urban Mobility”.

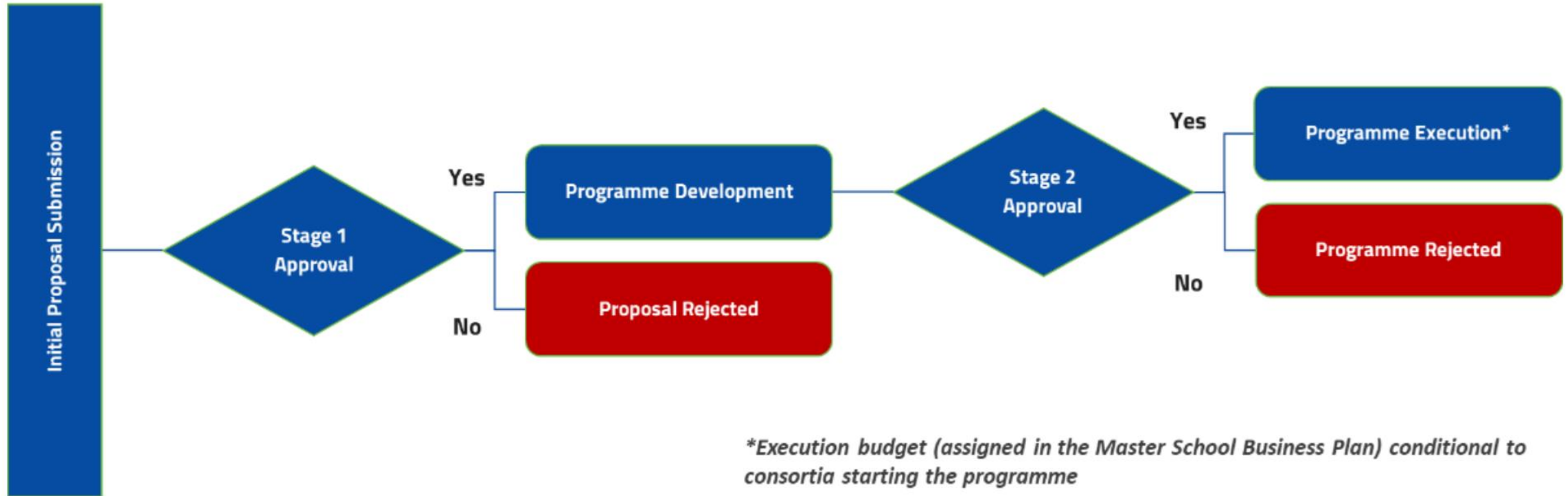
Goals: Students are expected to enrol Autumn 2026. Alignment with the existing consortium and MS leadership is necessary to agree on ECTS, curricula equivalence, programme’s schedule, entry/exit, etc.

Partner Requirements: Mono-entity applicants.

Minimum targets:

KPI	Short title	Target (Expected per cohort, per university)
EITHE05.1	Startups created by students and/or graduates from EIT-labelled programmes	Minimum 1
EITHE07.1	Graduates from EIT labelled programmes	Minimum 10

MSA2 and MSA3: Two-stage approval approach



Activity 4: I&E programmes, at Master level, that join the EIT Urban Mobility I&E Fellowship (MSA4)

Scope: Supporting existing I&E programmes to join the EIT Urban Mobility fellowship model. Welcoming programmes with min. one year and minimum 60 ECTS in length, resulting in a Master's degree, and in alignment with the requirements of the EIT Label Handbook for Fellowships.

Goals: Programmes applying to become part of the EIT Urban Mobility I&E Fellowship must have the potential to attract a minimum of 10 students to the Fellowship; and a minimum of six students must complete the Fellowship programme per cohort

Partner Requirements: Mono-entity applicants.

Minimum targets:

KPI	Short title	Target (Expected per cohort, per university)
EITHE05.1	Startups created by students and/or graduates from EIT-labelled programmes	Minimum 1
EITHE07.1	Graduates from EIT labelled programmes	Minimum 6

Activity 5: Summer Schools for Bachelor students (MSA5)

Scope: Development and implementation of a Summer School programme focusing on I&E in urban mobility and using challenge-based learning with a length of 1 week, including a group final project and involvement of local industry players. There needs to be a strong link between the Summer School activities and at least one of the current EIT Urban Mobility Master School programmes.

Goals: Raise awareness of the EIT Urban Mobility Master School and provide the students with knowledge about entrepreneurship applied to urban mobility, as well as motivating them to apply for the EIT Urban Mobility Master programme. Must be possible to include up to 40 students who have at least completed the 2nd year of bachelor's studies.

Partner Requirements: Multi and mono-entity applicants.

KPI	Short title	Target (per year)
EITHE07.1	Graduates from EIT labelled programmes	Minimum 30
EITHE08.1	Participants in (non-degree) education and training	Minimum 30

Note: In your application select EITHE07.1. If the EIT Label is not granted, external participants will be counted towards KPI EITHE08.1.

Activity 6: Other activities that contribute to achieving our targets (MSA6)

Scope: Development and implementation of activities that can demonstrate a measurable impact on our KPIs and financial sustainability. We seek initiatives that not only advance educational outcomes but also ensure the long-term viability and effectiveness of these activities.

Goals: : The activity should have the potential to be repeated and scaled, at a reduced cost, provided its first iteration is proven to contribute to the EIT Urban Mobility Master School and Fellowship KPI targets and financial sustainability.

Partner Requirements: Multi and mono-entity applicants.

Minimum targets (at least 2):

KPI	Short title	Target (per year)
EITHE05.1	Startups created by students and/or graduates from EIT-labelled programmes	Minimum 2
EITHE07.1	Graduates from EIT labelled programmes	Minimum 30
EITHE08.1	Participants in (non-degree) education and training	Minimum 30

Cross-cutting consideration for all activities (MSA1-MSA6)

- 1. Smart objectives:** Objectives should be SMART, demonstrating relevance and clear alignment with outcomes and results.
- 2. EIT Label Certification:** All education degree programmes financed by EIT Urban Mobility, including the Summer schools, must fit within the EIT Label Quality Framework. It is fundamental that the proposed programmes or curricula follow the key principles of the EIT Label, as well as the EIT Overarching Learning Outcomes. For further information, please see the EIT's information on the EIT Label, and the EIT Label Handbook for degree education and the EIT labelling handbook for fellowship schemes. Note: This may not be applicable to MSA6.
- 3. Communication and branding:** All EIT Urban Mobility education programmes, including the Summer schools, are expected to be branded and promoted according to the EIT Brand Book and Communication guidelines, and comply with the requirements of promoting the value of the EIT Label.



General Procedures



Call Calendar

- **Call opening:** 23 July 2024
- **Call closing:** 10 October 2024 at 17:00 CET
- **Admissibility and eligibility check:** October–November 2024
- **External evaluation of proposals:** November–December 2024
- **Communication of results:** December 2024–January 2025
- **Tentative start of the projects:** February 2025



NetSuite Registration & Access

STEP 1: register in the [EU Funding & tender opportunities portal](#) to obtain the nine-digit Participant Identification Code (**PIC number**). If an organisation has already a PIC number, there is no need to register again.

STEP 2: access the new [EIT Urban Mobility NetSuite platform](#), by submitting the [Partner Information Form \(PIF\)](#).

NB: For organisations that are already registered in the PLAZA platform, do not submit the PIF form but **contact the EIT Urban Mobility Service Desk** servicedesk@eiturbanmobility.eu: you will be provided with the credentials to access the new NetSuite platform.

STEP 3: access the [EIT Urban Mobility NetSuite platform](#) and find the open calls under *menu --> Call for Proposals --> Open Calls*.

Proposal Submission

NetSuite Live Demonstration



Tips & Tricks

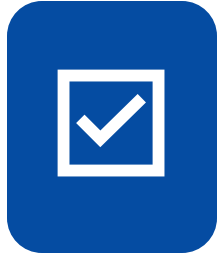
- All partners should be registered on NetSuite early on!
- Start creating and filling in the Application Form **at least 3 or 4 weeks before the submission deadline:** in this way you can familiarise yourself with the new system and can **let us know in due time if you are encountering any technical issues**
- Prepare your descriptions in an **offline document using the available application form on the Call website**, and copy and paste the text in the online Application Form once final.
- If you have **co-editors**, remember that only **one user** at the time should work on the Application Form.
- The **Budget tab** should be one of the **last tabs to be filled in** since the structure is directly linked to the Work Plan structure. The budget will only be available once you created the Work Packages.
- **Save often:** in this way you can make sure no information will get lost (if you stop working on the Application Form for some time, the system will log you out automatically without saving).
- **Do not wait the last day/minute to submit the Application Form:** should you encounter any system error while submit the AF, EIT Urban Mobility staff will in fact not be able to properly assist you.



Evaluation Process



Admissibility



The proposal is completed, submitted in time via Netsuite online submission tool, written in English and has all the mandatory sections.

- Deadline: 10 October 2024 at 17h CET
- Mandatory sections:
 - Application form



Eligibility

PIF/C

All applicants have fully completed the partner information form (PIF) in Netsuite online submission tool, including the PIC number.*



Applicants (including all consortium partners) are located in an **EU Member State or third country associated with Horizon Europe.**



- Mono-participant proposals or multi-participant proposals are accepted
- Multi-participant proposals: At least **two independent entities established in two different countries** from EU Members States or Third countries associated to Horizon Europe.

KPI

All proposals must include the minimum required KPIs of the specific activity group for which the project proposal is submitted (see Call Manual Section 3.5).

%€

Minimum co-funding rate of 25% across the project.

5-day cure period: co-funding, KPIs, partner registration

**PIC is assigned by the funding & tenders portal and then our applicants need it to register on NetSuite on our PIF.*



External evaluation – Quality evaluation

- To be carried out by three independent external expert evaluators.

Criteria	Max. score
Strategic fit	15 points
Excellence	30 points
Impact	30 points
Implementation	25 points
Total points	100 points

**Threshold:
60 points
out of 100**

Weight: 70%

Details on the evaluation criteria are available in the Call Manual Section 5.

External evaluation – Portfolio selection

- To be carried out by the Selection Committee to add 20 points to the final scoring.

Criteria	Max. score
EIT Urban Mobility Master School and/or Fellowship Portfolio Assessment	10 points
Business Intelligence and Strategic Assessment	10 points
Total points	20 points

Weight: 30%

Details on the evaluation criteria are available in the Call Manual Section 5.

Q&A



Connect with us

For more information

 @EIT Urban Mobility

 @EIT Urban Mobility

 @EIT UrbanMob

 @EIT Urban Mobility

 @EIT UrbanMob

eiturbanmobility.eu

